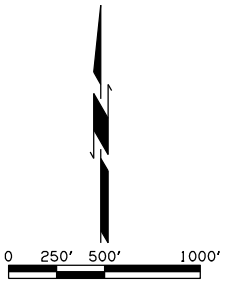
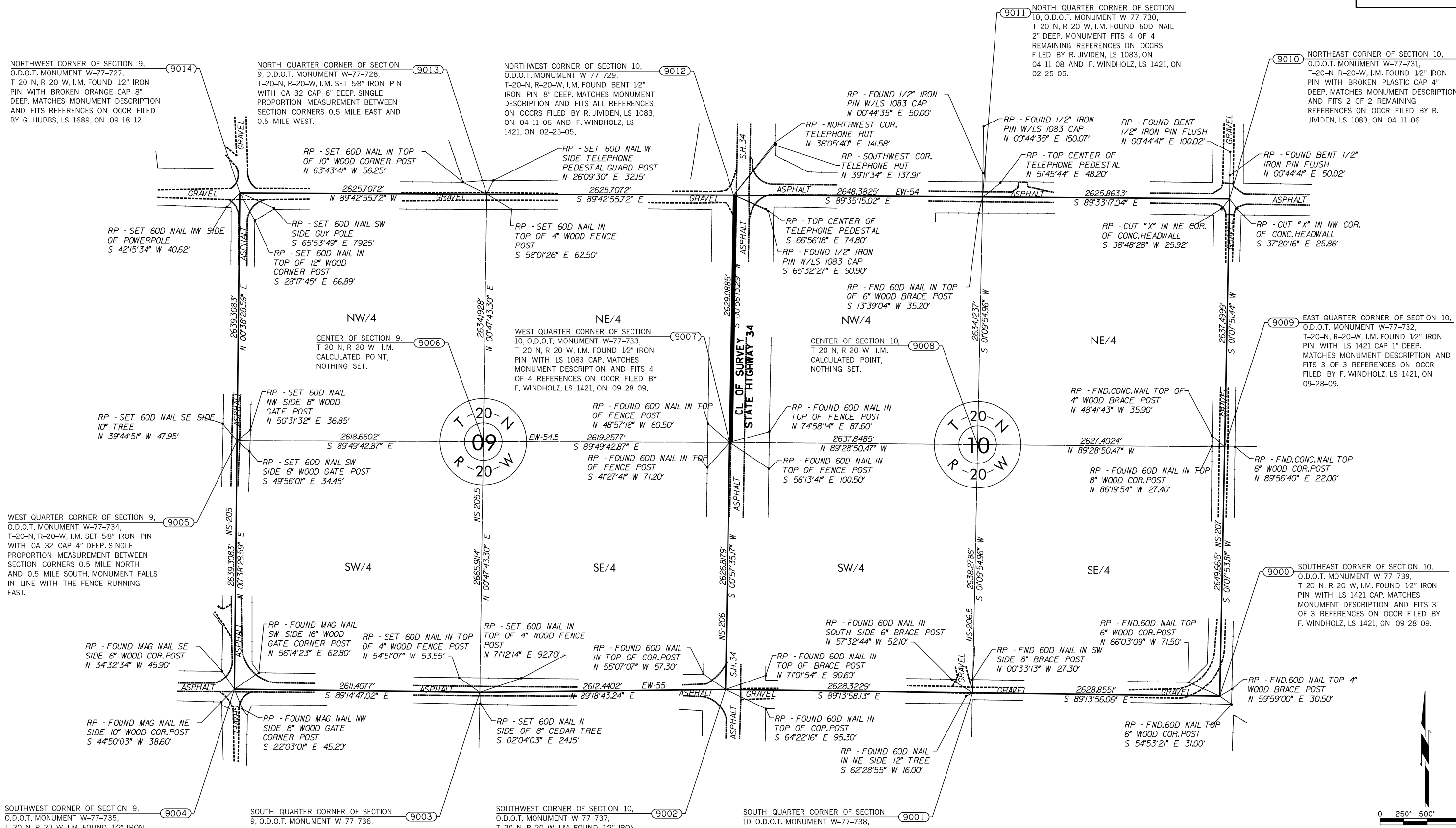


REV. NO.	DATE	DESCRIPTION



9004  
SOUTHWEST CORNER OF SECTION 9, O.D.O.T. MONUMENT W-77-735, T-20-N, R-20-W, I.M. FOUND 12" IRON PIN WITH CA 980 CAP 1" DEEP. MATCHES MONUMENT DESCRIPTION AND FITS 4 OF 4 REFERENCES ON OCCR FILED BY A. FELDER, LS 864, ON 05-04-08.

9003  
SOUTH QUARTER CORNER OF SECTION 9, O.D.O.T. MONUMENT W-77-736, T-20-N, R-20-W, I.M. FOUND 60D NAIL 1" DEEP. MONUMENT FITS 3 OF 3 REFERENCES ON OCCR FILED BY G. HUBBS, LS 1689, ON 09-18-12.

9002  
SOUTHWEST CORNER OF SECTION 10, O.D.O.T. MONUMENT W-77-737, T-20-N, R-20-W, I.M. FOUND 12" IRON PIN 6" DEEP. MATCHES MONUMENT DESCRIPTION AND FITS 3 OF 3 REFERENCES ON OCCR FILED BY F. WINDHOLZ, LS 1421, ON 09-28-09.

9001  
SOUTH QUARTER CORNER OF SECTION 10, O.D.O.T. MONUMENT W-77-738, T-20-N, R-20-W, I.M. FOUND 12" IRON PIN 2" DEEP. MATCHES MONUMENT DESCRIPTION AND FITS 3 OF 3 REFERENCES ON OCCR FILED BY F. WINDHOLZ, LS 1421, ON 09-28-09.

P.L.S.	J.H.F.	04/24/13	SH-34 BRIDGE OVER S. PERSIMMON CREEK, 4.9 MI. N. OF DEWEY COUNTY LINE	WOODWARD COUNTY
DRAWN	J.E.M.	04/24/13	<b>LAND TIE SHEET</b>	
CHECKED	J.H.F.	04/24/13		
APPROV.	J.H.F.	04/24/13		
CREW CHIEF	T.J.W.			
SWO NO. <u>4843W</u> J/P NO. <u>28825(04)</u> SHEET NO. <u>16</u>				